

AMENABAR

JARDINES DE ALCALÁ

- ALCALÁ DE HENARES -

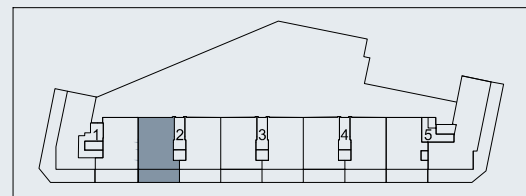
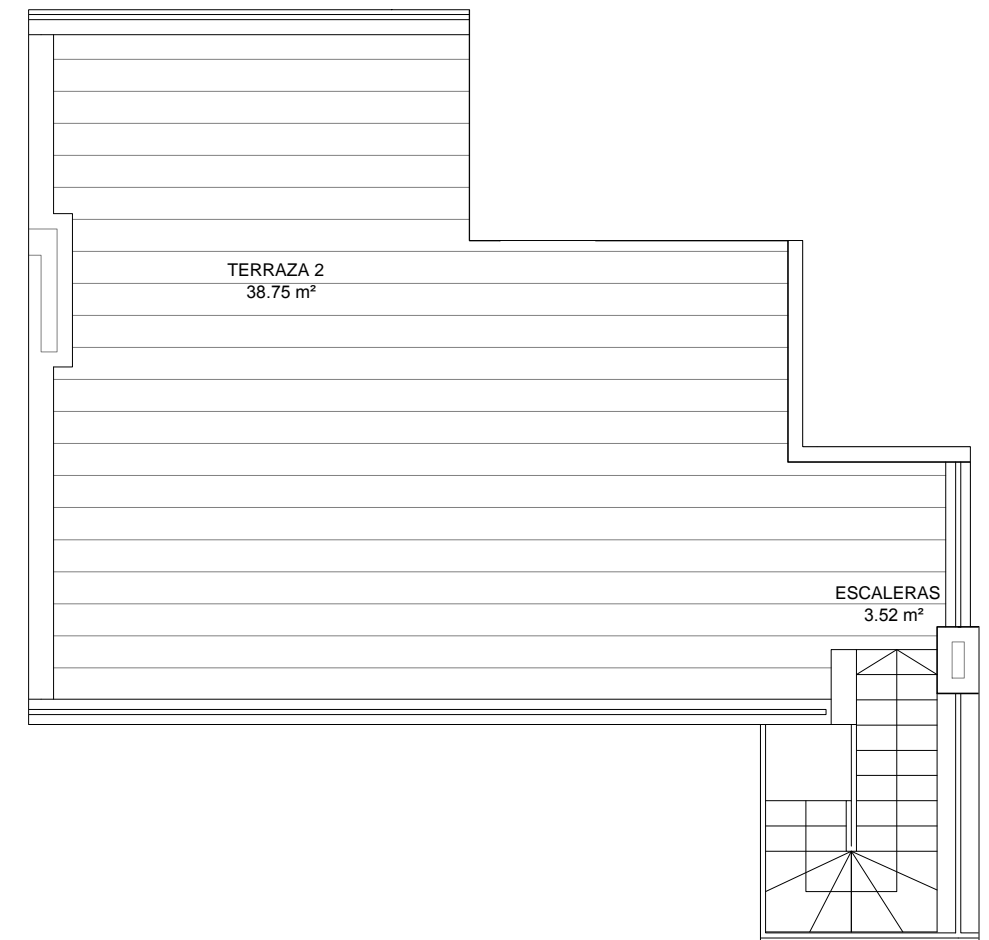
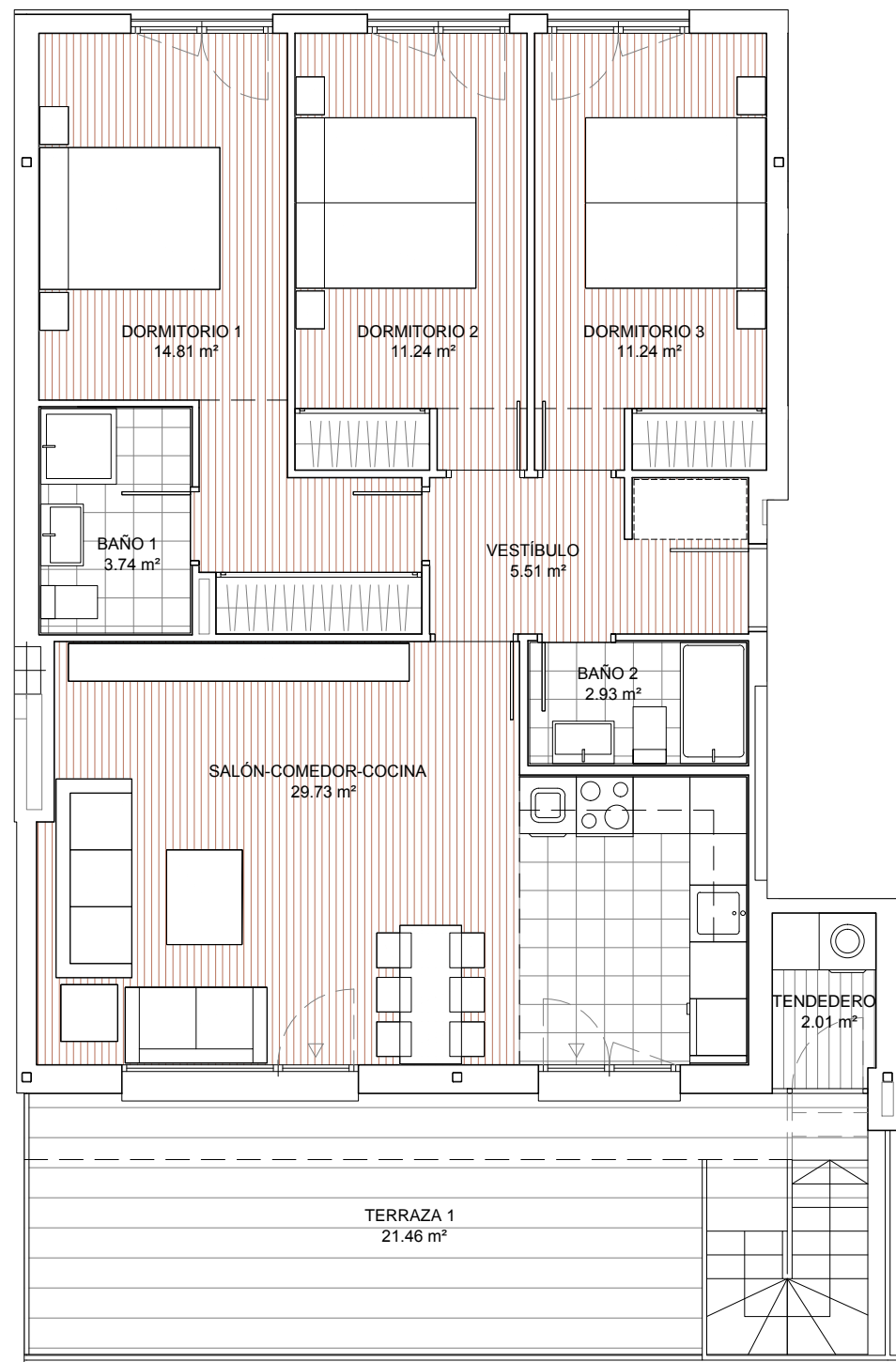
P2-Atico B 3D

TOTAL CONSTRUIDA VIVIENDA*: 105,79 m²

CONSTRUIDA TERRAZA: 69,74 m²

CONSTRUIDA TENDEDERO: 2,76 m²

* Con parte proporcional de elementos comunes.



0 1 2 3 4 5

Escala Gráfica



AMENABAR